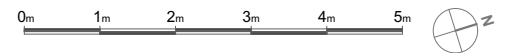
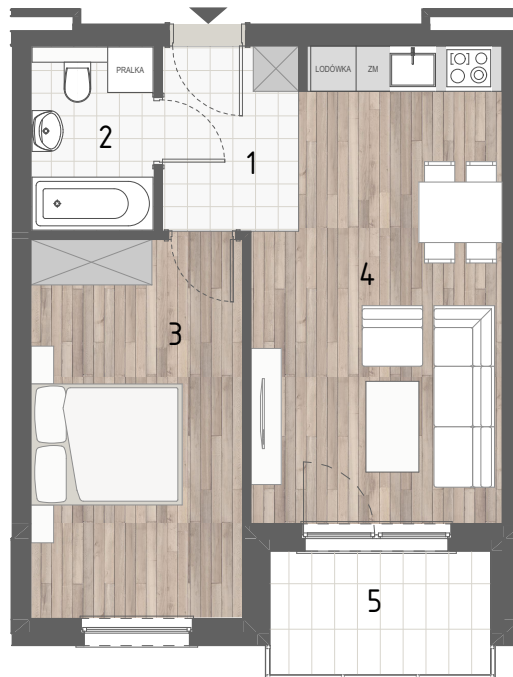


RZUT MIESZKANIA

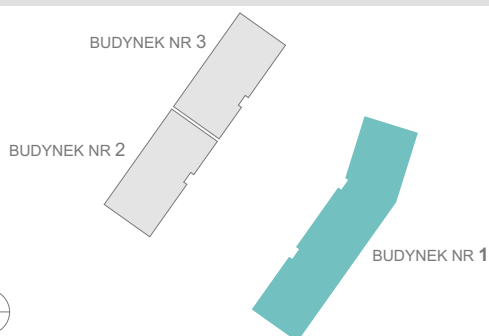


ZESTAWIENIE POWIERZCHNI

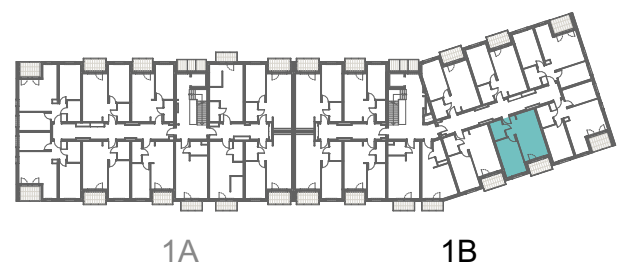
1.P. POKÓJ	3,24m <sup>2</sup>
2.ŁAZIENKA	3,99m <sup>2</sup>
3.SYPIALNIA	14,03m <sup>2</sup>
4.P. DZIENNY+ANEKS KUCH.	20,54m <sup>2</sup>

	<b>RAZEM:</b>	<b>41,80m<sup>2</sup></b>
5.BALKON		4,77m <sup>2</sup>

LOKALIZACJA BUDYNKU



LOKALIZACJA W BUDYNKU



PIĘTRO I